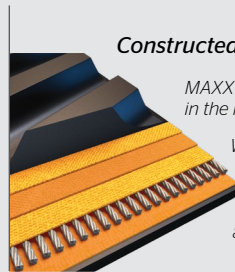




Today's largest, most powerful tractors demand tougher track. As the pioneer, Trackman® has continued to deliver game-changing innovations resulting in the most rugged track available. Take on today's toughest challenges and harsh environments with Trackman®.

Trackman®
for CLAAS®
Combines



Constructed for Longer Life

MAXXTUFF™ steel belting reinforcement is the strongest in the market today.

Wire-ply construction with 50% more wires per inch than our competition.

Patented galvanized cables prevent corrosion and premature weakness.



HP Plus

20% thicker carcass resists cuts, punctures and other damage

Double the wire dramatically improves track strength

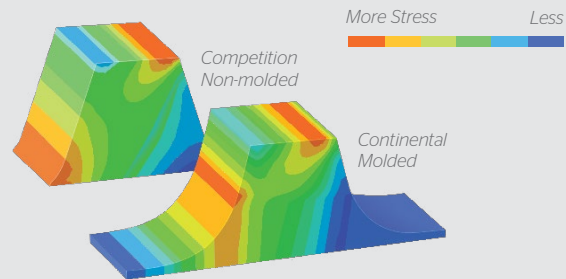
Stronger carcass reduces internal track temperatures and improves tread lug performance and wear life.

Trackman®
OUTWORKS. OUTLASTS. OUTPERFORMS. OUT HERE.



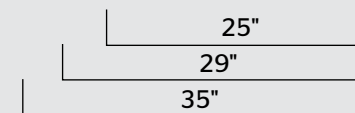
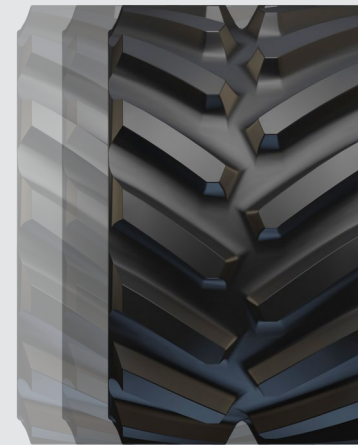
TRACKMAN® RUBBER TRACK SPECIFICATIONS FOR CLAAS®

| Product Code | Vehicle | SAP # | Description | Width (in.) | Length (in.) | # of Tread Lugs | Tread Pitch (in.) | Tread Lug Height (in.) | # of Guide Lugs | MAXXTUFF™ Layers | Carcass Thickness (in.) | Ship Weight (lb.) | Shipping Dimensions (in.) |
|------------------------------|----------------------|----------|------------------|-------------|--------------|-----------------|-------------------|------------------------|-----------------|------------------|-------------------------|-------------------|---------------------------|
| CLAAS LEXION Combines | | | | | | | | | | | | | |
| 616190 | CLAAS LEXION Combine | 20926583 | Trackman HP Plus | 25 | 264 | 88 | 6 | 2.5 | 44 | 3 | 1.25 | 970 | 30x120x31 |
| 616210 | CLAAS LEXION Combine | 20926584 | Trackman HP Plus | 29 | 264 | 88 | 6 | 2.5 | 44 | 3 | 1.25 | 1080 | 30x120x35 |
| 616220 | CLAAS LEXION Combine | 20926585 | Trackman HP Plus | 35 | 264 | 88 | 6 | 2.5 | 44 | 3 | 1.25 | 1260 | 30x120x41 |



Fully-Molded Is Stronger

- Fully-molded track equals tougher, longer-lasting track.
 - Non-fully-molded has built-in weak points that can lead to early deterioration and failure.
- On top of longer life, you get a more consistent rubber thickness which leads to greater stability and a smoother ride.



Just like our track, our warranty is second to none.

In accordance with the Continental Trackman Rubber Track warranty, the track is covered against material and/or workmanship defects. For complete warranty information, contact your Rubber Track dealer or visit our website at continental-trackman.com.