

**Continental**   
The Future in Motion

Rubber Track

Track $\lll$ man<sup>®</sup>

## The Original Positive Drive Track for Aftermarket Case IH

We're covering new ground with our all new re-engineered, industry-leading aftermarket lineup for Case IH tractors.

[www.contitech.us](http://www.contitech.us)

# Trackman® | RowTech



## Engineered Specifically to Withstand the Toughest Conditions

RowTech allows more time in the field and generates a higher yield. Designed for Case Rowtrac and New Holland SmartTrax machines, RowTech provides 70 percent more tread rubber than the previous design and offers increased damage resistance, improved ride quality, plus:

- › Increased warranty period (4 years material and workmanship)
- › Longer track life - more tread rubber content
- › Wider, taller and more robust tread construction
- › MAXXTUFF™ - four layers of steel belting in the carcass
  - Highest concentration of steel belting reinforcement in the market
- › Molded tread lugs for improved peel resistance
- › ARMORLUG® Technology for longer drive lug life
  - Uses dual, biased plies of continuous reinforcing fabric (No overlaps or splices)
  - Fabric reinforces all four sides of drive lugs
  - Fabric extends into the wheel path area providing added protection
  - Field-tested and proven performance extending drive lug life



Molded tread lugs

More robust tread construction

70% more tread rubber

Continuous reinforcing fabric - no overlaps or splices

# Trackman® | XP

## New Design Drastically Reduces Vibration

High-performance Trackman XP maximizes drive lug life in high pull/draw bar applications. Its revolutionary anti-vibration technology reduces vibration, dramatically improving operator comfort in heavy pull operations.

- › Improved wheel path rubber is formulated to minimize abrasion and puncture damage
- › Enhanced tread compounding provides higher load/speed capabilities, better abrasion resistance, cooler running
- › MAXXTUFF™ - four layers of steel belting in the carcass
  - Highest concentration of steel belting reinforcement in the market
- › Patented galvanized cable makes XP the most corrosion resistant track
- › Fully molded tread lugs for greater durability
- › ARMORLUG® Technology for longer drive lug life
  - Uses dual, biased plies of continuous reinforcing fabric (No overlaps or splices)
  - Fabric reinforces all four sides of drive lugs
  - Fabric extends into the wheel path area providing added protection
  - Field-tested and proven performance extending drive lug life

Improved wheel path rubber

Fully molded tread lugs

Longer drive lug life



**“A quadtrac customer was experiencing vibration issues under heavy load conditions. We installed Trackman XP and the vibration decreased significantly right away.”**

- Case IH Dealer

Enhanced anti-vibration carcass construction

The most corrosion-resistant track



# Trackman® | STX

## The Future of Tread Compounding Today

Conceived from experience, enhanced for the future, Trackman STX offers improved tread compounding for higher load/speed capabilities, better abrasion resistance and cooler running.

- › MAXXTUFF™ - four layers of steel belting in the carcass
  - Highest concentration of steel belting reinforcement in the market
- › Patented galvanized cable provides the most abrasion-resistant track
- › Fully molded tread lugs for greater durability
- › ARMORLUG® Technology for longer drive lug life
  - Uses dual, biased plies of continuous reinforcing fabric (No overlaps or splices)
  - Fabric reinforces all four sides of drive lugs
  - Fabric extends into the wheel path area providing added protection
  - Field-tested and proven performance extending drive lug life



Added protection  
Cooler running

Patented galvanized cable

Drive lugs reinforced with ARMORLUG fabric

Four layers of steel belting in the carcass

The most abrasion-resistant track

## Newly re-engineered Rubber Track

What separates Trackman from any other manufacturer is that our tracks are engineered in conjunction with our cutting-edge undercarriage components, providing the only complemented system in the market. Combined with our in-depth rubber compounding knowledge and decades-long track experience, we're leading the way in **industry-first track durability.**



**Trackman**

The Quadtrac® undercarriage relies solely on Continental Trackman for these critical rubber components: rubber mounts, roller wheels, bump stops and idler wheels.

## ARMORLUG® technology

- › ARMORLUG® state-of-the-art reinforcement material is incorporated in the ARMORLUG® track construction to help you deal with the severe demands you face every day.
- › Field tested with 23% track service life improvement versus standard production tracks.
- › ARMORLUG® technology takes Positive Drive applications to the next level.



## Trackman® Aftermarket Rubber Track Specification for Case IH Tractors

Product Code	Vehicle	Description	Width (in.)	Length (in.)	# of Tread Lugs	Tread Pitch (in.)	Tread Lug Height (in.)	# of Guide Lugs	# of Wire Plies	Carcass Thickness (in.)	Ship Weight (lb.)
<b>CASE IH 9300</b>											
703611790	CNH 9300	Standard Ag.	30	234	78	6.0	2.0	39	3	1.25	997
703611810	CNH 9300	Scraper	30	234	78	6.0	2.0	39	4	1.25	1000
<b>CASE IH STX</b>											
703611830	CNH STX	Standard Ag.	30	252	84	6.0	2.0	42	3	1.25	753
703611390	CNH STX	Scraper with ARMORLUG®	30	252	84	6.0	2.0	42	4	1.25	806
703611840	CNH STX	Ag. with ARMORLUG®	36	252	84	6.0	2.0	42	3	1.25	1087
703615270	CNH STX	XP Ag.	30	252	84	6.0	2.0	42	3	1.25	1020
703615640	CNH STX	XP Scraper with ARMORLUG®	30	252	84	6.0	2.0	42	4	1.25	1079
703615280	CNH STX	XP with ARMORLUG®	36	252	84	6.0	2.0	42	3	1.25	1318
<b>CASE IH RowTrac &amp; New Holland SmartTrax</b>											
703614960	Rowtrac™/SmartTrax	RowTech™ with ARMORLUG®*	16.5	264	88	6.0	1.75	44	4	1.5	753
703614970	Rowtrac™/SmartTrax	RowTech™ with ARMORLUG®*	18	264	88	6.0	1.75	44	4	1.5	806
703614980	Rowtrac™/SmartTrax	RowTech™ with ARMORLUG®*	24	264	88	6.0	1.75	44	4	1.5	1087
703614990	Rowtrac™/SmartTrax	RowTech™ with ARMORLUG®*	30	264	88	6.0	1.75	44	4	1.5	1218

\*Built with innovative MAXXTUFF technology

Continental  
NAFTA Headquarters  
703 S. Cleveland Massillon Road  
Fairlawn, OH 44333-3023 U.S.A.  
1-877-394-0482  
FAX 1-800-525-0910  
trackinquiries@contitech.us

**Europe**  
+49 (0)511 938 02  
mailservice@contitech.de

[www.contitech.us](http://www.contitech.us)



### Engineering Next Level

As a division of the Continental Group, ContiTech is a recognized innovation and technology leader in natural rubber and plastics. As an industry partner with a firm future ahead of us, we engineer solutions both with and for our customers around the world. Our bespoke solutions are specially tailored to meet the needs of the market. With extensive expertise in materials and processes, we are able to develop cutting-edge technologies while ensuring we make responsible use of resources. We are quick to respond to important technological trends, such as function integration, lightweight engineering and the reduction of complexity, and offer a range of relevant products and services. That way, when you need us, you'll find we're already there.

Trackman® is a registered trademark of Continental ContiTech.  
Case IH and Quadtrac® are registered trademarks of CNH America LLC.



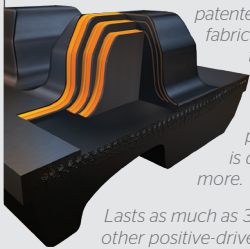
**Today's largest, most powerful tractors demand tougher track.** That's why Case IH® chose Trackman® to create the world's first positive-drive track. And we continue to deliver groundbreaking innovations resulting in the most rugged track out there. Without question, our track and undercarriage components handle more horsepower and deliver better traction to pull more weight. That means Trackman can take on today's heaviest, most powerful tractors with total confidence.

## Trackman®

Case IH® Tractors  
 Quadtrac®,  
 Quadtrac® Rowtrac™,  
 Magnum™ Rowtrac™ and  
 New Holland SmartTrax™



### World's Strongest Drive Lugs



ARMORLUG® ULTRA is the first patented drive lug with three fabric layers embedded in the lugs.

Easily handles today's biggest, most powerful tractors and is designed to take on more.

Lasts as much as 30% longer than any other positive-drive track.

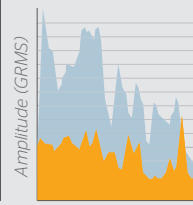
### Trackman® RowTech™



Features 70% more tread rubber for greater damage resistance and improved ride quality.

Built with four layers of MAXXTUFF™ steel belting in the carcass - the highest concentration of steel belting reinforcement in the market.

### Up to 70% Reduction in Vibration



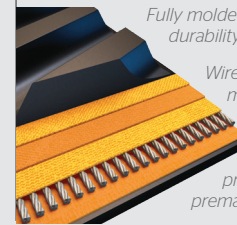
Heavy Draw Bar Use

■ Standard Track  
 ■ Trackman XP

Our exclusive Anti-Vibration Technology™ and advanced tread design greatly reduces vibration by as much as 50% to 70% versus standard tracks.

Compound and construction improves drive lug engagement, reduces drive lug distress and extends track life.

### Constructed for Longer Life



Fully molded lugs deliver unsurpassed durability and longevity.

Wire-ply construction with 50% more wires per inch than our competition.

Patented galvanized cables prevent corrosion and premature weakness.

Trackman®

OUTWORKS. OUTLASTS. OUTPERFORMS. OUT HERE.



## TRACKMAN® RUBBER TRACK SPECIFICATIONS FOR CASE IH® TRACTORS

CNH Part Number	Vehicle	Description	Warranty	Width (in.)	Length (in.)	# of Tread Lugs	Tread Pitch (in.)	Tread Lug Height (in.)	# of Guide Lugs	# of Wire Plies	Carcass Thickness (in.)	Ship Weight (lb)
<b>Case IH 9300</b>												
256800A2	CNH 9300	Trackman® Ag	4-year	30	234	78	6.0	2.0	39	3	1.25	999
386848A1	CNH 9300	Trackman® Scraper	2-year	30	234	78	6.0	2.0	39	4	1.25	997
<b>Case IH QuadTrac®</b>												
51457436	CNH Quadtrac®	Trackman® XP	4-year	30	252	84	6.0	2.0	42	3	1.25	1058
51457437	CNH Quadtrac®	Trackman® XP	4-year	36	252	84	6.0	2.0	42	3	1.25	1251
47826945	CNH Quadtrac®	Trackman® XP + ARMORLUG®	4-year	30	252	84	6.0	2.0	42	4	1.25	1079
47829015	CNH Quadtrac®	Trackman® XP + ARMORLUG® Scraper	2-year	30	252	84	6.0	2.0	42	4	1.25	1079
47829014	CNH Quadtrac®	Trackman® XP + ARMORLUG®	4-year	36	252	84	6.0	2.0	42	4	1.25	1318
84379424	CNH Quadtrac®	Trackman® XP + ARMORLUG® ULTRA	5-year	30	252	84	6.0	2.0	42	4	1.25	1079
84379427	CNH Quadtrac®	Trackman® XP + ARMORLUG® ULTRA Scraper	3-year	30	252	84	6.0	2.0	42	4	1.25	1079
84379425	CNH Quadtrac®	Trackman® XP + ARMORLUG® ULTRA	5-year	36	252	84	6.0	2.0	42	4	1.25	1318
<b>Case IH Rowtrac™/New Holland SmartTrax™</b>												
47801555	CNH Rowtrac™/ SmartTrax™	Trackman® RowTech™ + ARMORLUG®	4-year	16.5	264	88	6.0	1.75	44	4	1.5	753
47801556	CNH Rowtrac™/ SmartTrax™	Trackman® RowTech™ + ARMORLUG®	4-year	18	264	88	6.0	1.75	44	4	1.5	797
47801558	CNH Rowtrac™/ SmartTrax™	Trackman® RowTech™ + ARMORLUG®	4-year	24	264	88	6.0	1.75	44	4	1.5	1089
47801559	CNH Rowtrac™/ SmartTrax™	Trackman® RowTech™ + ARMORLUG®	4-year	30	264	88	6.0	1.75	44	4	1.5	1218



*Just like our track, our warranty is second to none.*

*In accordance with the Continental Trackman® Rubber Track warranty, the track is covered against material and/or workmanship defects. For complete warranty information, contact your rubber track dealer or visit our website at [www.continental-trackman.com](http://www.continental-trackman.com).*





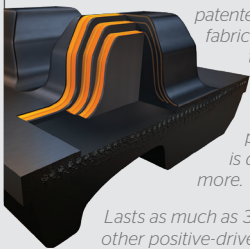
**Today's largest, most powerful tractors demand tougher track.** That's why Case IH® chose Trackman® to create the world's first positive-drive track. And we continue to deliver groundbreaking innovations resulting in the most rugged track out there. Without question, our track and undercarriage components handle more horsepower and deliver better traction to pull more weight. That means Trackman can take on today's heaviest, most powerful tractors with total confidence.

## Trackman®

Case IH® Tractors  
 Quadtrac®,  
 Quadtrac® Rowtrac™,  
 Magnum™ Rowtrac™ and  
 New Holland SmartTrax™



### World's Strongest Drive Lugs



ARMORLUG® ULTRA is the first patented drive lug with three fabric layers embedded in the lugs.

Easily handles today's biggest, most powerful tractors and is designed to take on more.

Lasts as much as 30% longer than any other positive-drive track.

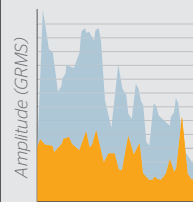
### Trackman® RowTech™



Features 70% more tread rubber for greater damage resistance and improved ride quality.

Built with four layers of MAXXTUFF™ steel belting in the carcass - the highest concentration of steel belting reinforcement in the market.

### Up to 70% Reduction in Vibration



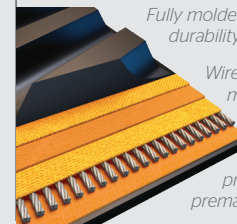
Heavy Draw Bar Use

■ Standard Track  
 ■ Trackman XP

Our exclusive Anti-Vibration Technology™ and advanced tread design greatly reduces vibration by as much as 50% to 70% versus standard tracks.

Compound and construction improves drive lug engagement, reduces lug distress and extends track life.

### Constructed for Longer Life



Fully molded lugs deliver unsurpassed durability and longevity.

Wire-ply construction with 50% more wires per inch than our competition.

Patented galvanized cables prevent corrosion and premature weakness.

Trackman®

OUTWORKS. OUTLASTS. OUTPERFORMS. OUT HERE.



## TRACKMAN® RUBBER TRACK SPECIFICATIONS FOR CASE IH® TRACTORS

Product Code	Vehicle	Description	Warranty	Width (in.)	Length (in.)	# of Tread Lugs	Tread Pitch (in.)	Tread Lug Height (in.)	# of Guide Lugs	# of Wire Plies	Carcass Thickness (in.)	Ship Weight (lb)
<b>Case IH 9300</b>												
611790	CNH 9300	Trackman® Ag	4-year	30	234	78	6.0	2.0	39	3	1.25	999
611810	CNH 9300	Trackman® Scraper	2-year	30	234	78	6.0	2.0	39	4	1.25	997
<b>Case IH QuadTrac®</b>												
616850	CNH Quadtrac®	Trackman® XP	4-year	30	252	84	6.0	2.0	42	3	1.25	1020
616860	CNH Quadtrac®	Trackman® XP	4-year	36	252	84	6.0	2.0	42	3	1.25	1318
615270	CNH Quadtrac®	Trackman® XP + ARMORLUG®	4-year	30	252	84	6.0	2.0	42	4	1.25	1020
615640	CNH Quadtrac®	Trackman® XP + ARMORLUG® Scraper	2-year	30	252	84	6.0	2.0	42	4	1.25	1079
615280	CNH Quadtrac®	Trackman® XP + ARMORLUG®	4-year	36	252	84	6.0	2.0	42	4	1.25	1318
616260	CNH Quadtrac®	Trackman® XP + ARMORLUG® ULTRA	5-year	30	252	84	6.0	2.0	42	4	1.25	1020
611980	CNH Quadtrac®	Trackman® XP + ARMORLUG® ULTRA Scraper	3-year	30	252	84	6.0	2.0	42	4	1.25	1079
612570	CNH Quadtrac®	Trackman® XP + ARMORLUG® ULTRA	5-year	36	252	84	6.0	2.0	42	4	1.25	1318
<b>Case IH Rowtrac™/New Holland SmartTrax™</b>												
614960	CNH Rowtrac™/ SmartTrax™	Trackman® RowTech™ + ARMORLUG®	4-year	16.5	264	88	6.0	1.75	44	4	1.5	753
614970	CNH Rowtrac™/ SmartTrax™	Trackman® RowTech™ + ARMORLUG®	4-year	18	264	88	6.0	1.75	44	4	1.5	797
614980	CNH Rowtrac™/ SmartTrax™	Trackman® RowTech™ + ARMORLUG®	4-year	24	264	88	6.0	1.75	44	4	1.5	1034
614990	CNH Rowtrac™/ SmartTrax™	Trackman® RowTech™ + ARMORLUG®	4-year	30	264	88	6.0	1.75	44	4	1.5	1218



*Just like our track, our warranty is second to none.*

*In accordance with the Continental Trackman® Rubber Track warranty, the track is covered against material and/or workmanship defects. For complete warranty information, contact your rubber track dealer or visit our website at [www.continental-trackman.com](http://www.continental-trackman.com).*



# THE WORLD'S BEST TRACTOR NOW RIDES ON THE WORLD'S MOST ADVANCED TRACK.



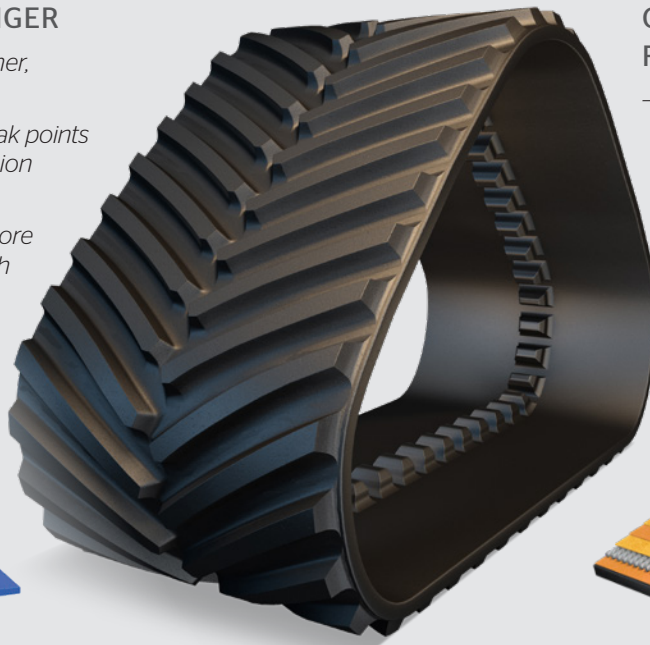
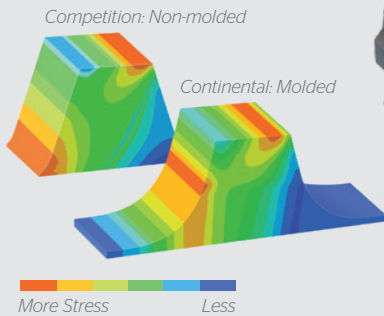
The NEW Trackman XP line of tracks comes standard on the 2019 Quadtrac. Our partnership with Case runs deep because together we bring new innovations and set new standards. And we'll continue to deliver groundbreaking innovations in every track we make.

## DESIGNED TO BE STRONGER, LAST LONGER AND RIDE SMOOTHER

### FULLY-MOLDED IS STRONGER

- Fully-molded track equals tougher, longer-lasting track
- Non fully-molded has built-in weak points that can lead to early deterioration and failure

On top of longer life, you get a more consistent rubber thickness which leads to greater stability and a smoother ride.

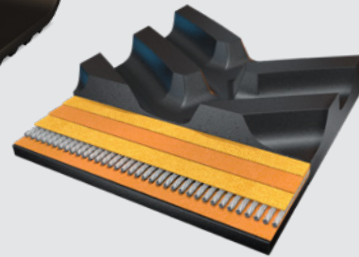


### CONSTRUCTED FOR LONGER LIFE

- Wire-ply construction with 50% more wires per inch than our competition

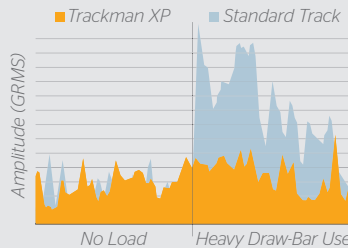
- Patented galvanized steel cables prevent corrosion and premature weakness

All this adds up to a track that will last season after season, even under the heaviest load.



### UP TO 70% REDUCTION IN VIBRATION

- Our exclusive Anti-Vibration Technology™ and advanced tread design on our XP track greatly reduces vibration by as much as 50% to 70% vs. standard track

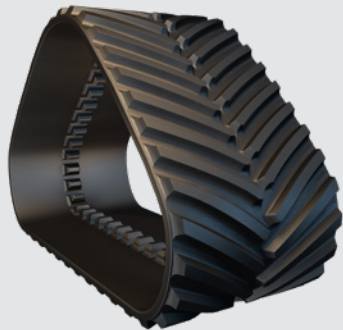


- Compound and construction improves drive lug engagement, reduces drive lug distress and extends track life

Our tread design also maximizes traction and dirt cleanout for improved performance.

**Trackman**

OUTWORKS. OUTLASTS. OUTPERFORMS. OUT HERE.



## Trackman | XP

### STANDARD ON QUADTRAC'S LESS THAN 580HP

*Continental Trackman XP has been designed to handle more horsepower and deliver better traction to pull more weight.*

**Our XP track delivers:**

- Improved track life that outlasts other tracks
- Reduced vibration for improved ride and operator comfort
- New wheel path compound is formulated to minimize abrasion and punctures



## Trackman | XP

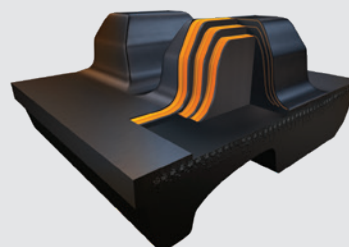
+ ARMORLUG®

### STANDARD ON QUADTRAC'S 580HP AND GREATER

*It has been thoroughly field-tested to deliver proven performance in the toughest conditions and outperform any other track of its kind.*

**Includes all XP track features, plus:**

- Exclusive ARMORLUG® technology extends the life of the track up to 23% more over the standard track
- Reinforcement fabric covers the entire drive lug and extends into the wheel path for added drive lug protection
- 4-year best-in-class limited manufacturer warranty



## Trackman | XP

+ ARMORLUG® ULTRA

### HAULS THE HEAVIEST LOADS AT MAX HORSEPOWER AND TORQUE

*Designed to take on more, thanks to its patented drive lug with three fabric layers embedded in the lugs for unmatched durability.*

**Includes all XP track features, plus:**

- First patented drive lug with three fabric layers embedded in the lugs
- Offers up to a 25% increase in torque capability
- Lasts as much as 30% longer than other positive-drive track
- 5-year best-in-class limited manufacturer warranty

Case Part #	Track	Continental Part #	Width (inches)	MAXXTUFF™ Layers
51457436	Trackman XP	616850	30	3
51457437	Trackman XP	616860	36	3
47826945	Trackman XP with ARMORLUG	615270	30	4
47829014	Trackman XP with ARMORLUG	615280	36	4
47829015	Trackman XP with ARMORLUG SC	615640	30	4
84379424	Trackman XP with ARMORLUG Ultra	616260	30	4
84379425	Trackman XP with ARMORLUG Ultra	612570	36	4
84379427	Trackman XP with ARMORLUG Ultra SC	611980	30	4

**Continental**  
703 S. Cleveland Massillon Road  
Fairlawn, OH 44333-3023 U.S.A.  
1-877-394-0482  
continental-trackman.com

The trademarks displayed in this publication are the property of Continental AG and/or its affiliates. Copyright © 2018 ContiTech AG. All rights reserved.

