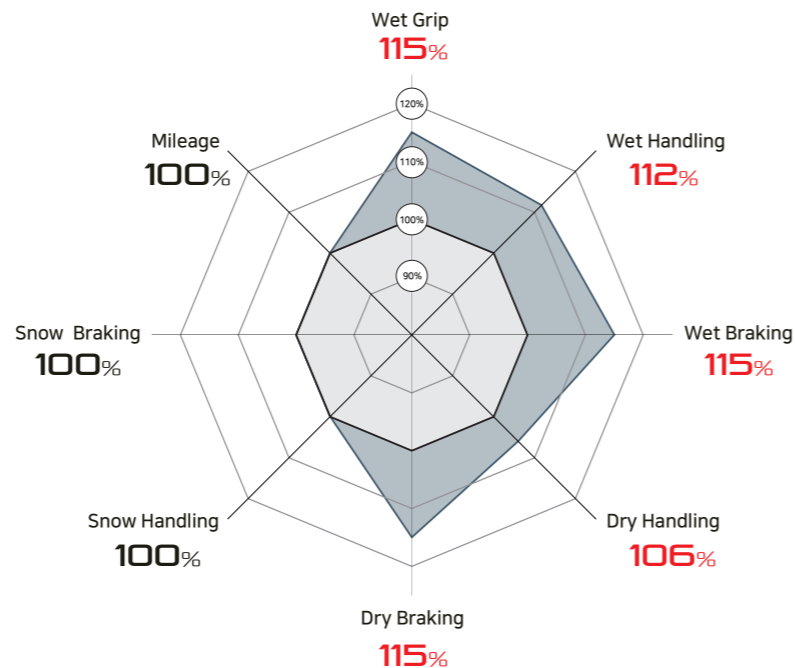


Performance Test Result

- ▶ Size : 195/65R15 95V XL
- ▶ Car : VW Golf 7
- ▶ Test Track
 1. Spain IDIADA : Dry & Wet
 2. Finland Ivalo Mellatrack(Test World) : Snow



SOLUS 4S HA32 
 Conventional 



Available Sizes

*N = Noise

18"	RR	Wet	N	dB	N Class
225/40R18 XL 92W	C	B	72DB	2	
225/45R18 XL 95W	C	B	72DB	2	
225/55R18 XL 102V	C	B	72DB	2	
245/40R18 XL 97W	C	B	72DB	2	
245/45R18 XL 100W	C	B	72DB	2	

17"	RR	Wet	N	dB	N Class
205/45R17 XL 88V	E	B	72DB	2	
205/50R17 XL 93W	C	B	72DB	2	
205/55R17 XL 95V	C	B	72DB	2	
215/45R17 XL 91V	C	B	72DB	2	
215/50R17 XL 95W	C	B	72DB	2	
215/55R17 XL 98W	C	B	72DB	2	
215/65R17 XL 103V	B	B	72DB	2	
225/45R17 XL 94W	C	B	72DB	2	
225/50R17 XL 98V	C	B	72DB	2	
225/55R17 XL 101W	C	B	72DB	2	
235/45R17 XL 97W	C	B	72DB	2	

16"	RR	Wet	N	dB	N Class
195/55R16 XL 91V	E	B	72DB	2	
205/55R16	91H	C	B	72DB	2
205/55R16 XL	94V	C	B	72DB	2
205/60R16 XL	96V	C	B	72DB	2
215/55R16 XL	97V	C	B	72DB	2
215/60R16 XL	99V	C	B	72DB	2
215/65R16 XL	102V	C	B	72DB	2
225/55R16 XL	99V	C	B	72DB	2

15"	RR	Wet	N	dB	N Class
165/65R15	81T	E	B	71DB	2
175/55R15	77T	E	B	71DB	2
175/65R15	84H	E	B	71DB	2
185/55R15 XL	86H	E	B	71DB	2
185/60R15 XL	88H	E	B	71DB	2
185/65R15	88H	E	B	71DB	2
195/50R15	82H	E	B	72DB	2
195/55R15	85H	E	B	72DB	2
195/60R15	88H	E	B	72DB	2
195/65R15	91H	C	B	72DB	2
195/65R15 XL	95V	C	B	72DB	2
205/65R15 XL	99V	C	B	72DB	2

14"	RR	Wet	N	dB	N Class
155/65R14	75T	E	B	71DB	2
165/60R14	75H	E	B	71DB	2
165/65R14	79T	E	B	71DB	2
165/70R14 XL	85T	E	B	71DB	2
175/65R14	82T	E	B	71DB	2
185/60R14	82H	E	B	71DB	2



KUMHO TYRE
Better, All-Ways



Excellent 4 Season Performance

SOLUS 4S HA32

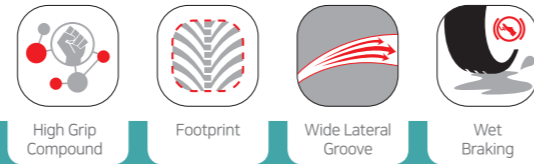


KUMHO TYRE CO., INC.
68, Saemunan-ro, Jongno-gu, Seoul, 03184, Korea
www.kumhotire.com

SOLUS 4S HA32

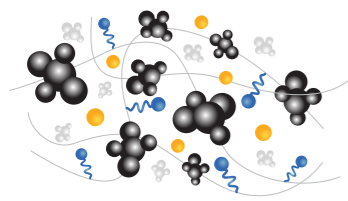
Excellent 4 Season Performance

- Balanced and constant performance all year-round
- Maximized grip in all weather conditions
 - 15% better Wet Grip
- Impressive performance on wet roads
 - 10% better Wet/Dry Handling & Braking
- Enhanced snow performance

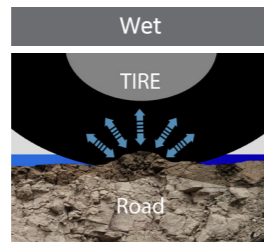


Maximized Grip & Wet Performance

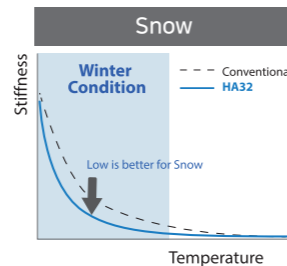
A New High Grip Compound



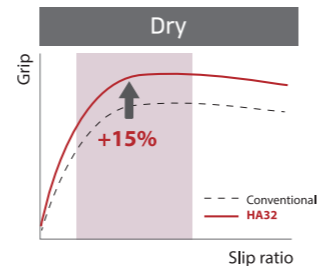
New High Grip Compound based on natural ingredients from "pine resin"



Maximize Wet Grip by applying max hysteresis compound



Maintain compound 'softness' to maximize snow grip



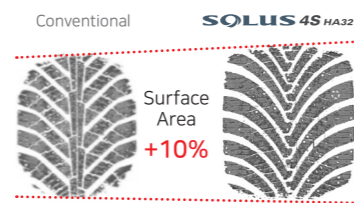
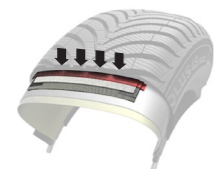
Shorter braking distance by using "pine resin" reinforced traction

B Uniform Footprint Shape

Optimized tyre profile improves braking and grip performance in every driving situation

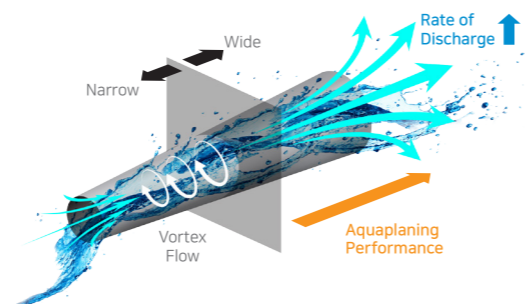
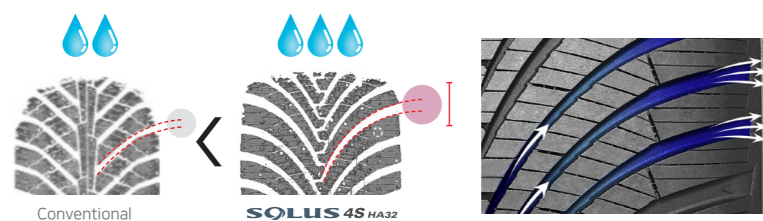


[Computer-aided Engineering] [High stiffness/Angle Belt]

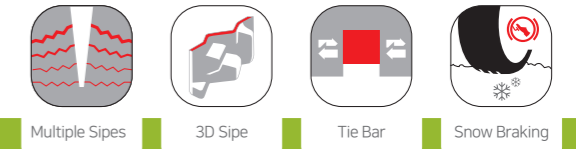


C Wide Lateral Groove

Wide and high angled grooves improve aquaplaning resistance

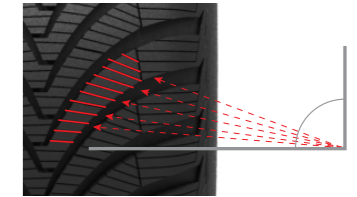
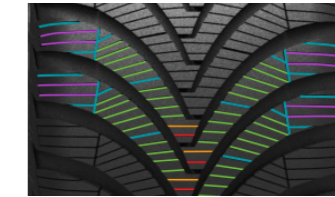


Enhanced Snow & All-Season Performance



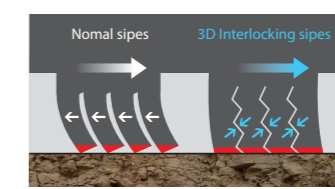
D Multiple Sipes

New Composition along with high density, multiple sipes enhance block stiffness providing better traction on snow and all-weather handling



E 3D Interlocking Sipe

Interlocking 3D sipes at shoulder area provide enhanced handling performance in any weather condition



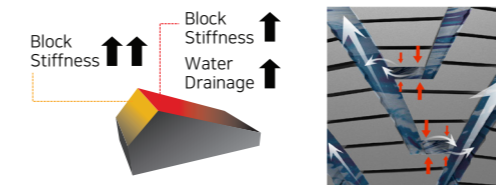
Two of the cut edges momentarily lock together



SOLUS 4S HA32 Conventional

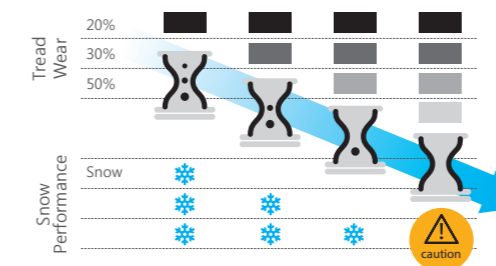
F 3D Slope Tie-Bar

Upgraded Tie bars that connect the center blocks reinforce block stiffness for better handling and water drainage



G Snow Performance & Wear Indicator

Hourglass shape wear indicator on shoulder area helps customers check snow performance and wear level conveniently



H M+S and 3PMSF certified

Compliance with European Regulations for Winter Tyres

